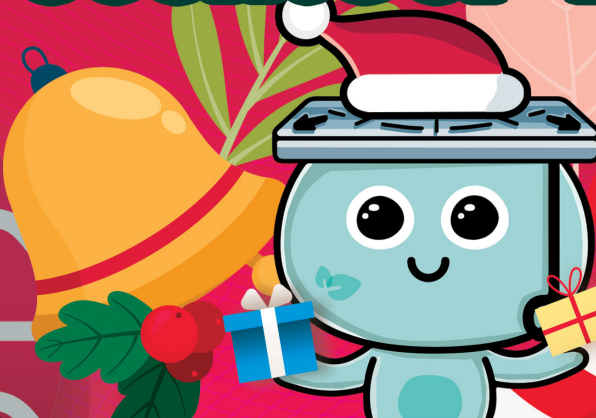


# Newsletter 通訊 December 12月2023



副連接隧道的防爆門  
Blast Door for Secondary Access Tunnel

## 已完成的工程 Works Completed Recently



通風井防爆罩  
Blast Cover for Ventilation Shaft



頂管工程  
Pipe Jacking Works

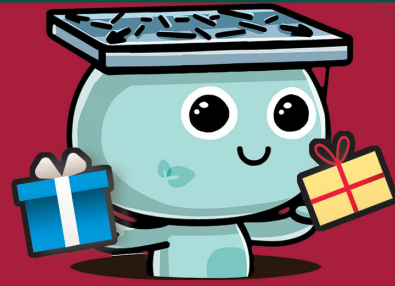
## 進行中的工程 Works in Progress



副連接隧道口的斜坡鞏固工程  
Slope Stabilization Works above  
Secondary Access Tunnel and Portal



主體岩洞建築群建造工程  
Construction of Main Caverns Complex



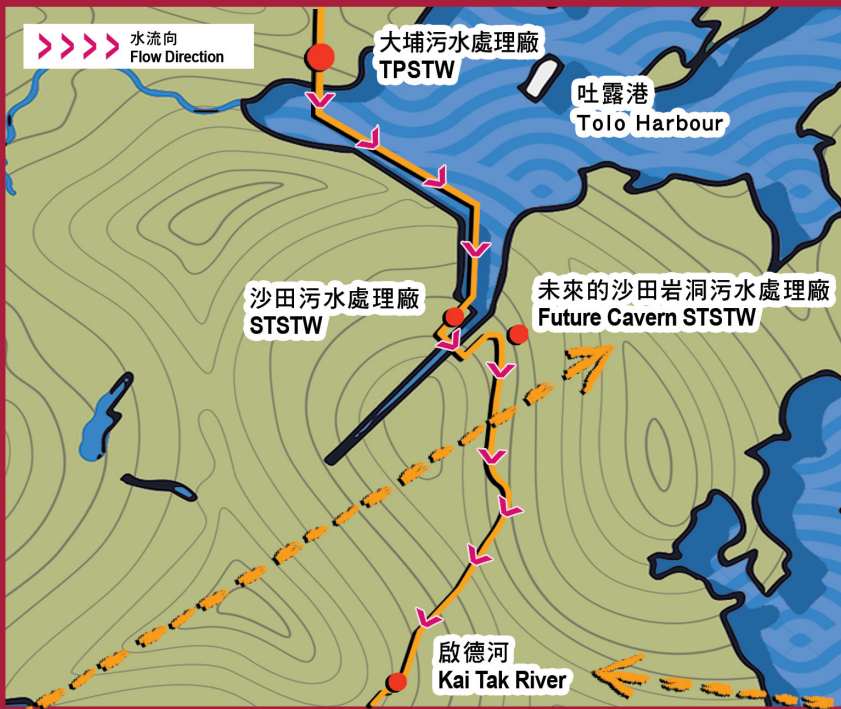
現時，污水於大埔及沙田兩間污水處理廠完成二級處理過程後，並非排放到鄰近的吐露港，而是經輸水隧道傳送到黃大仙區的啟德河，最後排放至維多利亞港。整個計劃名為「吐露港經處理排放水輸送計劃」(THEES)，自1998年全面實施後，有效提升吐露港的水質，同時間提供所需條件令以往的啟德明渠能活化成今天的啟德河。

為可將未來沙田岩洞污水處理廠的經處理排放水連接至現時的THEES輸水隧道，我們需要在石質堅硬的女婆山內興建兩條直徑約2.2米、長約320米的排放水管道。

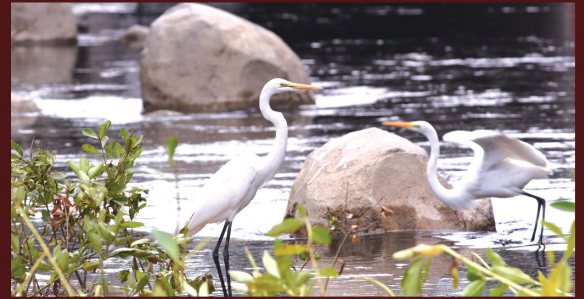
Currently, sewage going through secondary treatment at Tai Po Sewage Treatment Works (TPSTW) and Sha Tin Sewage Treatment Works (STSTW) is not discharged to the adjacent Tolo Harbor. Instead, the treated effluent is conveyed to the Kai Tak River in Wong Tai Sin through a transfer tunnel and finally discharged to Victoria Harbour. The scheme is known as the Tolo Harbor Effluent Export Scheme (THEES). Since its full implementation in 1998, the water quality in Tolo Harbour has shown encouraging signs of improvement and at the same time provided the necessary conditions for the Kai Tak Nullah to revitalize into today's Kai Tak River.

In order to connect the treated effluent from the future Cavern STSTW to the existing THEES tunnel, we need to build two 2.2m diameter, 320m long effluent discharge pipes within the Nui Po Shan with very strong rock.





吐露港經處理排放水輸送計劃的走線  
Tolo Harbour Effluent Export Scheme Alignment



啟德明渠於2018年活化成本港首條  
市區綠化河道走廊 — 啟德河  
In 2018, Kai Tak Nullah was revitalised into the first  
urban green river corridor in Hong Kong – Kai Tak River

項目名稱: 搬遷沙田污水處理廠往岩洞-  
主體岩洞建造工程(DC/2020/05)  
建設單位: 渠務署  
監理單位: AECOM 艾奕康有限公司  
施工單位: AEC 中建-愛銘聯營  
分包單位: 滙通建築工程有限公司  
製造單位: 中國鐵建重工集團股份有限公司



慣性導航系統及里程錶  
Inertial Navigation System and  
Odometer

為了完成這項困難的工序，我們特地為本地盤度身訂造了合適的隧道鑽挖機和刀盤，以確保鑽挖的效率。另外，隧道鑽挖機配上慣性導航系統及里程錶，以提高挖掘準確度。

In order to complete this challenging task, a Tunnel Boring Machine (TBM) and its cutter disk were tailor-made for our site to ensure the efficiency of the drilling works. Also, the TBM was equipped with Inertial Navigation System and Odometer for enhancing the accuracy of the drilling works.



刀盤  
Cutter Disk



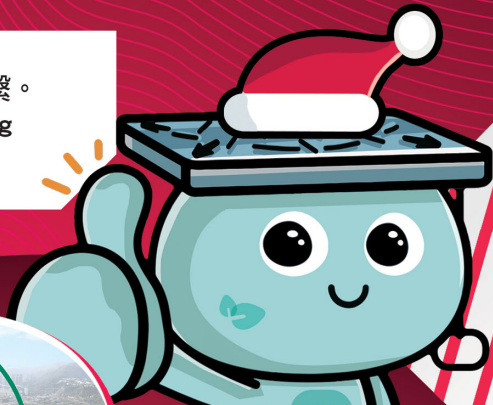
操作室  
Operating Room



隧道鑽挖機  
Tunnel Boring Machine

# 社區關懷 Community Caring

在推進工程的同時，我們亦不忘與社區保持聯繫。  
We stay connected with the Community during the project delivery.



2023年1月  
JAN 2023



第五次社區聯絡小組會議  
5th Community Liaison Group Meeting



搬遷沙田污水處理廠  
往岩洞計劃

2023年1月17日 (星期二)

與沙田區議會進行會議  
Meeting with Sha Tin District Council



與附近機構代表進行  
工程進度簡報會  
Liaison meeting with nearby organization

2023年2月  
FEB 2023



與鄰近學校講解最新  
工程安排  
Liaison meeting with nearby school

2023年3月  
MAR 2023



鄰近學校參加社區聯絡  
中心導賞團  
CLC guided tour for nearby school



學校參加社區聯絡中心  
導賞團及生涯規劃  
CLC guided tour and life planning for school

2023年5月  
MAY 2023



學校參加社區聯絡中心  
導賞團及生涯規劃  
CLC guided tour and life planning for school

2023年6月  
JUN 2023

2023年4月  
APR 2023



到鄰近團體派發紀念品  
Distributing souvenirs to nearby organization

2023年8月  
AUG 2023



到鄰近屋苑舉辦中秋攤位遊戲  
Organizing a Mid-Autumn Festival game booth at nearby estate

2023年9月  
SEP 2023



到鄰近學校舉辦展覽  
Exhibition at nearby school

2023年11月  
NOV 2023

CONTACT US

聯絡我們

渠務署 Drainage Services Department  
岩洞工程部 Cavern Projects Division

顧問公司 Consultant  
艾奕康有限公司 AECOM Asia Company Limited

承辦商 Contractor  
中建-愛銘聯營 China State - Alchmex Joint Venture

工程網址 Contract Website  
<https://ststwincaverns.hk/>

24小時熱線 24-Hour Hotline  
(852) 5220 0180

電郵 Email  
[pr@stc-aecom.com](mailto:pr@stc-aecom.com)

Facebook  
STSTWinCaverns