

Newsletter August 2021

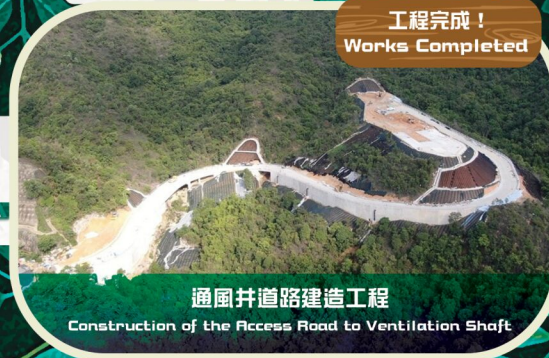
隨著第一階段的主要工程接近完成，第二階段 - 「主體岩洞建造工程」緊接展開，我們希望透過這份簡訊，讓大家了解工程的最新進度及資訊。

Since the majority of works under the Stage 1 Works were completed, and the Stage 2 Works "Main Caverns Construction" has been started, we would like to update you with the latest status of the project in this newsletter.



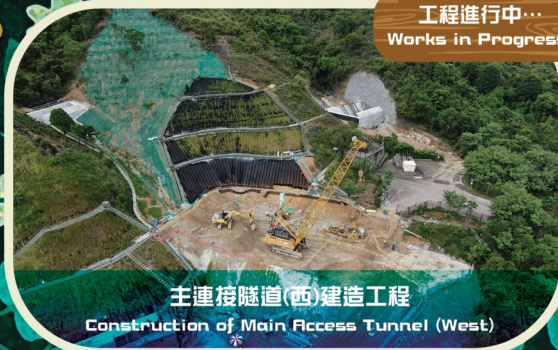
工程進行中...
Works in Progress

主連接隧道及出入口建造工程
Construction of Main Access Tunnel and Portal



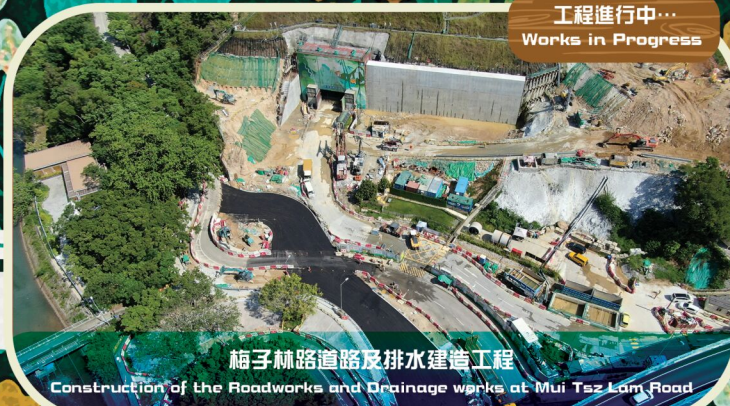
工程完成!
Works Completed

通風井道路建造工程
Construction of the Access Road to Ventilation Shaft



工程進行中...
Works in Progress

主連接隧道(西)建造工程
Construction of Main Access Tunnel (West)



工程進行中...
Works in Progress

梅子林路道路及排水建造工程
Construction of the Roadworks and Drainage works at Mui Tsz Lam Road

我——下水水很高興通知大家，我們的第二階段工程合約：「主體岩洞建造工程」（合約編號 DC/2020/05）已於2021年7月5日正式展開。現在讓我來向大家介紹這工程的主要範圍：

I, Drainy, am glad to inform you that our Stage 2 Works Contract: "Main Caverns Construction" (Contract No. DC/2020/05) was commenced on 5 July 2021. I would like to introduce you the major scope of this Contract:

- 在女婆山興建約14公頃的主體岩洞建築羣
Construction of main caverns complex of about 14 hectare at Nui Po Shan
- 興建一條副連接隧道
Construction of a secondary access tunnel
- 興建一個通風井及一條通風坑道
Construction of a ventilation shaft and a ventilation adit
- 興建兩條直徑約2.2米的排放水管道
Construction of two effluent pipes of about 2.2 m in diameter
- 其他工程包括：工地平整、天然山坡風險緩減措施、建造臨時炸藥倉庫等
Other related works including site formation works at portal, natural terrain hazard mitigation measures, construction of temporary magazine compound etc



創新科技應用

Application of Innovative Technology



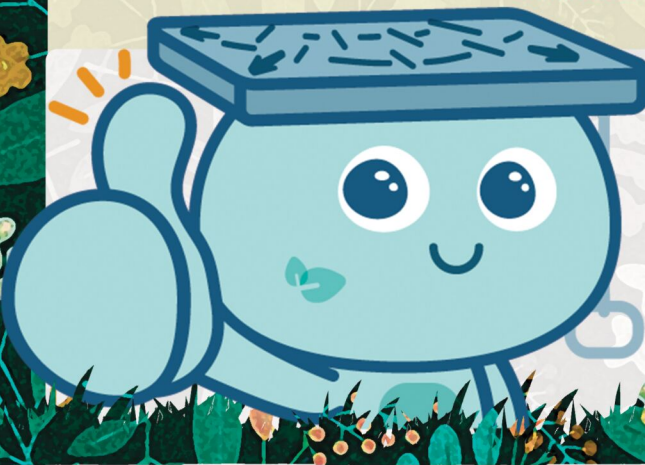
機械電氣管道 (MiMEP) 是一種用於在工地現場外預製管道工程的技術。它採用了“裝配式設計” (DfMA) 進行管道施工。

MultiTrade integrated Mechanical Electrical Plumbing (MiMEP) is a technique for pre-fabricating pipe works off-site, adopting the method of Design for Manufacture and Assembly (DfMA) for pipe construction.

減少地盤現場施工時間，免除管道和配件獨立吊運的需要。
Reduced the construction time on site. Eliminated the need of lifting pipe segments and fittings individually; connection works were carried out in separated operations.

MiMEP 是一種比傳統工序更安全的管道施工方法。這種施工方法免除了工人在壕坑中進行管道工程時，因狹窄工作環境而衍生的施工風險。
Compared to traditional approach, MiMEP is a relatively safe option for pipeworks construction. MiMEP avoids the need of carrying out pipeworks in trench environment, as such the risks associated with limited workspace are eliminated, associated with limited workspace eliminated.

在可持續性方面，MiMEP 可減少潛在的建築廢料，通過細心策劃，可以在預製過程中更精確地估算材料數量來減少廢料。
Sustainable Construction MiMEP could help reducing wastage through pre-fabrication process where usage of materials can be controlled more efficiently.



搬遷沙田污水處理廠往岩洞的

效益 Benefits

of Relocating STSTW to Caverns



更有效管理氣味，有助優化附近的社區
Better control odour and improve the environment



騰出約28公頃土地作房屋及有利民生用途
Releasing of 28 hectare of land for housing and other beneficial use



未雨綢繆，藉著搬遷計劃的契機及採用更先進污水處理技術和設施，提升服務質素
Long term planning for the aging sewage treatment facilities and adopt advanced sewage treatment technology to improve our services

話你知... More Information

聖女芭拉被視為隧道工人、礦工和炸藥使用者的守護神。

相傳聖女芭拉的故事與閃電有關，奇蹟又常常發生在她身上，保護她的生命。自此芭拉被視為他們的守護神，相信她能夠庇佑他們避免發生爆破和地下挖掘工程的事。因此在每年的12月，隧道工人都會慶祝芭拉節，以紀念她和冀求一切順利。

Saint Barbara is regarded as the Patron Saint of the tunnelers, miners and others who work with explosives.

Legend has it that Barbara miracles had occurred to protect her. Her stories are often associated with lightning and thunders, and this caused Barbara to be regarded as the Patron Saint of tunnelers and miners for aid against accidents resulting from explosions and underground excavation works. It has become a tradition for the tunnelers to celebrate St. Barbara's Day in every December to honor her for the patron.



? ? 「珍寶」是什麼? ? ?
? ? What is "Jumbo"? ? ?

女婆山的岩石以花崗岩為主，非常堅硬，故此需使用爆破技術挖掘。

傳統隧道工程長久以來利用鑿岩台車 (Tunnel Drilling Jumbo)，俗稱「珍寶」，根據已審核的設計為爆破面鑽控炸藥孔。

在「珍寶」臂架上的鑽頭裝設了感應器，透過隨鑽測量 (MWD)系統輔助，實時收集岩石數據，例如：岩石的強度、每個鑽孔的實際位置、方向及深度，以作更精準的分析及策劃。

Drill-&Blast method is adopted for tunnel and cavern excavation for this project in view of the comparatively favourable ground conditions at Nui Po Shan.

Tunnel Drilling Jumbo, a.k.a. Jumbo, has been used for tunneling works for years. One of its key functions is for tunnel face drilling based on the approved blast design to facilitate explosive charging in Drill-&Blast operation.

With Measure While Drilling (MWD) system, which comprises sets of sensors on the booms of Jumbo, real-time monitoring of drilling performance data, such as torque, feed and percussion data, etc are made possible. The MWD system provides a complementary tool for rock mass characterization which enables further optimization of blast design for tunneling works.





2021年4月 鄰近學校到訪社區聯絡中心雨水花園參觀
Apr 2021 Visit Rain Garden of Community Liaison Center from the neighbouring school



2021年5月 鄰近社區聯絡中心命名比賽「最佳命名得獎者」頒獎典禮
May 2021 Community Liaison Center Naming Competition Awards Ceremony with winners



2021年2月 到善善之家為院友及家人拍攝全家福
Feb 2021 Take family photos for residents & residents' relatives



2021年5月 到與鄰近村民講解最新工程安排
May 2021 Meeting with nearby residents to explain the latest project arrangements



2021年4月 與怡和山莊講解亞公角路工程安排
Apr 2021 Meeting with Harmony Manor on 12th Apr



2021年7月 與福子林閣村民王先生採摘自家種植大樹菠蘿
Jul 2021 Sharing jackfruit with Mr. Wong at Mui Tsz Lam Road



2021年4月 與怡和山莊命名填色及標語創作比賽嘉禮頒獎禮
Apr 2021 Virtual Awards Ceremony of coloring and slogan competition with Harmony Manor



2021年5月 到鄰近樓宇及屋苑派發工程簡訊
May 2021 Distribute newsletter to the nearby estates



聯絡我們 Contact Us

渠務署 DSD
 岩洞工程處 Cavern Projects Division
 顧問公司 Consultant
 艾奕康有限公司 AECOM Asia Company Limited
 承辦商 Contractor
 中國建築聯營 China State Joint Venture
 中建 - 麥銘聯營 China State - Alchmex Joint Venture
 工程網址 CONTRACT WEBSITE
<https://ststwin.caverns1.hk>
 24小時熱線 24-Hour Hotline
 (852) 5220 0180
 電郵 Email
pr@stc-aecom.com
 Facebook
 STSTWinCaverns

